



## Asia Engineering (HK) Limited 亞洲工程管理有限公司

Building | Civil | Geotechnical | Structural | Environmental Engineering Consultant  
樓宇 | 土木 | 土力 | 結構 | 環保 工程顧問

### Hong Kong- Zhuhai – Macao Bridge, Hong Kong Boundary Crossing Facilities (HKBCF) Highways Department Contract No. HY/2013/01 – Passenger Clearance Building (PCB)

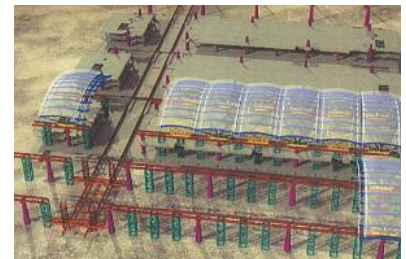
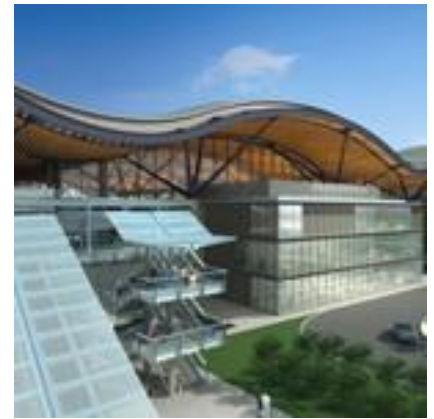
港珠澳大橋 香港口岸

路政署 合約編號：HY/2013/01 - 旅檢大樓

Client: Leighton – Chun Wo Joint Venture 業主：禮頓 - 俊和聯營

Scope: Tender Support Service 投標支援服務

Tender Successful – Contract Sum \$8.4 Billion 投標成功 - 合約額 \$84 億



The tender involves construction of Passenger Clearance Building, drop off deck / area, footbridges, and district cooling system, etc. for HKBCF

投標包括興建港珠澳大橋香港口岸的旅檢大樓、高架及地面落客區、行人天橋以及區域性冷卻系統等。

The construction works of the HKBCF include cargo & passenger clearing and vehicle inspection facilities, offices for frontline departments (such as Immigration Department, Customs & Excise Department, etc), road networks, public transport interchange and associated civil, traffic control surveillance system and landscaping works, etc

香港口岸工程項目包括建造貨物、旅客及相關車輛檢查和過關設施，前線部門（如入境事務處，香港海關等）的辦公地方，道路設施，公共運輸交匯處，以及相關的土木、交通控制及監察系統和環境美化工程等。